

AWLQ STATISTICS 2015/16

The following statistics are divided into **three** sections:

SECTION 1

Total animals cared for (almost 19,000 animals, including all strays and most surrenders from Gold Coast City, Ipswich and Brisbane, plus some unclaimed strays and surrenders from other surrounding South East Queensland and Northern New South Wales areas).

SECTION 2

Gold Coast City Council residents' animals only (i.e. approximately 5,500 stray and surrendered dogs and cats plus approximately 500 other animals such as birds, guinea pigs, cattle, horses and pigs, in a human population of approximately 520,000).

Gold Coast City data is particularly useful, for the following reasons:

- (i) The Gold Coast is one of the few large cities where the data represents the whole city (in this case, a growing city of more than 500,000 people with an estimated 13,000 to 16,000 new residents coming to the city each year). AWLQ has been managing the pound animals for the Gold Coast City Council for more than 25 years. We accept all unclaimed strays at the end of their holding period; and have the only two shelters on the Gold Coast for animals surrendered by their owners. This data therefore provides a consistent, unique source of information for governments and shelter organisations to identify the issues and develop solutions to the oversupply of abandoned animals in a whole community.
- (ii) Gold Coast statistics illustrate the success of the range of strategies that AWLQ has put in place to reduce the numbers of abandoned and euthanised animals i.e. the Getting to Zero Model www.g2z.org.au.

AWLQ reached its goal of zero killing of healthy sociable dogs (since June 2008) and cats (since May 2009) in Gold Coast City, and is one of the few cities in Australia also saving most of the treatable dogs and cats.

In 2015/16 AWLQ maintained its lifesaving achievements with 90% of stray and surrendered Gold Coast dogs and 84% of stray and surrendered Gold Coast cats reclaimed or rehomed – an 88% save rate of all incoming stray and surrendered animals for the whole city. Because a substantial number of animals are also being brought into the Gold Coast Rehoming Centre from other communities (e.g. 55% of Ipswich animals were transferred to the Gold Coast) this adds to the complexity of achieving zero euthanasia in the whole City of Gold Coast. Once other communities can reduce their oversupply and rehome their own animals, it will be possible to save all of the treatable animals as well.

We work to rehabilitate many animals with pre-existing behaviour issues or stress-related illness, particularly flu in cats. We strongly work on prevention through desexing, particularly unwanted cats, and education programs (particularly animal owners, secondary students and teachers) and have worked with local government to develop a model breeder permit system, which requires inspections for meeting standards of care, socialisation and rehoming of dogs and cats. We are constantly seeking new ways to reduce euthanasia rates and hope to reduce this rate even further.

SECTION 3

Ipswich City Council residents' animals only (i.e. more than 6,200 stray and surrendered dogs and cats in 2015/16 plus approximately 150 other animals such as birds, guinea pigs, cattle, horses and pigs,) in a population of approximately 190,000 people. AWLQ has cared for the pound animals for Ipswich City Council since October 2011, accepting all the unclaimed stray and surrendered animals from the public at the Rehoming Centre.

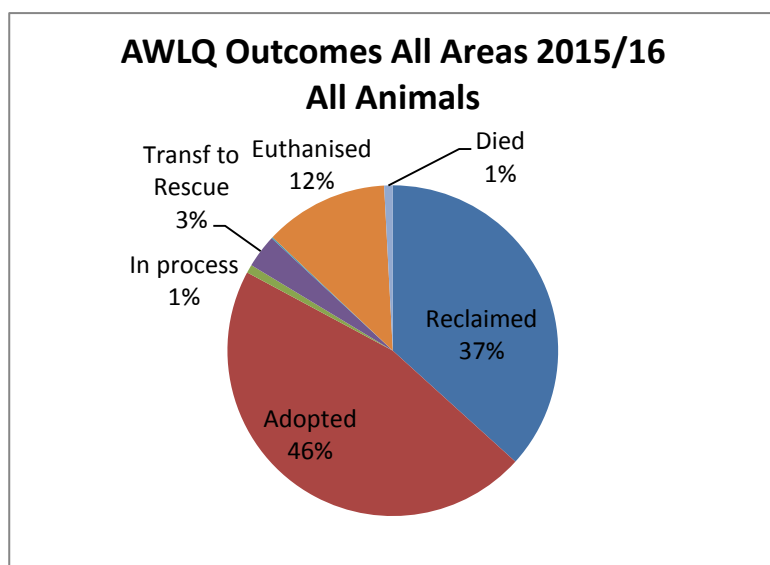
In 2009/10 prior to the contract, only 20 dogs (2% of unclaimed stray and surrendered dogs) and 4 cats (0% of cats) were rehomed by Ipswich City Council with a further 267 dogs (24%) and 85 cats (8%) transferred to other groups (mainly AWLQ) to rehome. In 2015/16, the final year of the contract, AWLQ rehomed 1,344 dogs (71%) and 1,732 cats (71%) with a further 4% of both dogs and cats transferred to rescue groups for rehoming.

In the same period, euthanasia rates of unclaimed stray and surrendered animals were reduced from 72% to 24% of dogs and from 92% to 21% of cats.

SECTION 1 AWLQ ALL AREAS

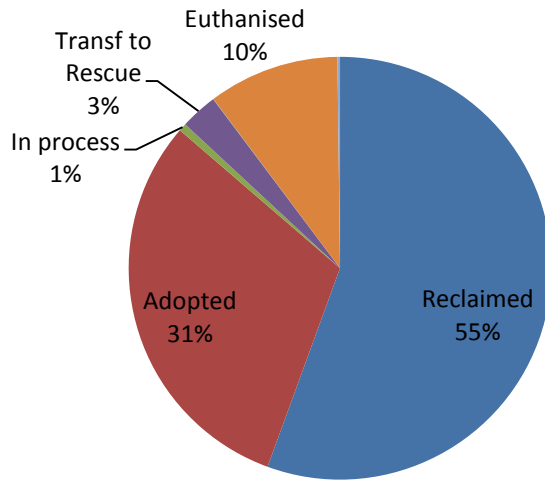
AWLQ Outcomes - All animals 2015/16

Animal Type	Reclaimed	Adopted	In process	Transfer to Rescue	Escaped/Stolen	Euthanised	Died	Total
Puppy	76	1108	8	37	0	44	12	1285
Dog	6142	2332	59	280	3	1078	10	9904
Canine	6218	3440	67	317	3	1122	22	11189
% Canine	56	31	1	3	0	10	0	100
Kitten	15	2695	54	126	5	255	117	3267
Cat	500	1930	25	107	12	835	2	3411
Feline	515	4625	79	233	17	1090	119	6678
% Feline	8	69	1	3	0	16	2	100
Bird	82	87	0	3	1	1	2	176
Cattle	15	0	0	0	0	0	0	15
Fowl	3	164	1	48	1	35	7	259
Goat	10	28	0	1	1	4	1	45
Guinea Pig	6	217	1	0	0	6	3	233
Horse	3	1	0	1	0	0	0	5
Pig	2	7	0	2	0	0	0	11
Rabbit	0	0	0	3	0	5	0	8
Rodent	0	36	3	0	0	3	3	45
Sheep	7	17	0	2	0	0	0	26
Other Subtotal	128	557	5	60	3	54	16	823
%TotOth	16%	68%	1%	7%	0%	7%	2%	100%
Grand Total:	6861	8622	151	610	23	2266	157	18690
% All Animals	37%	46%	1%	3%	0%	12%	1%	100%



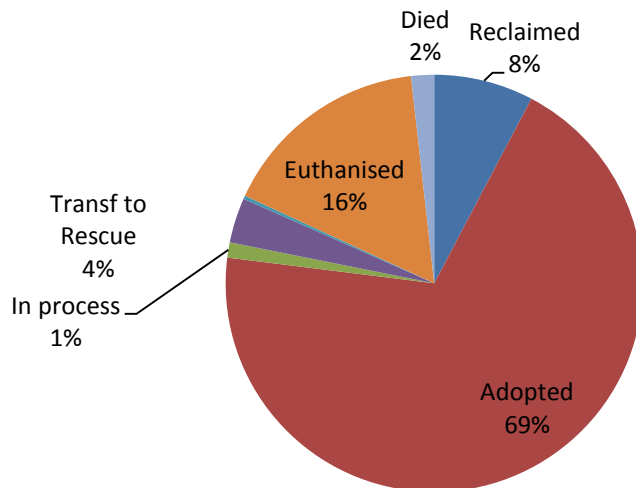
AWLQ Outcomes All Areas 2015/16

Dogs



AWLQ Outcomes All Areas 2015/16

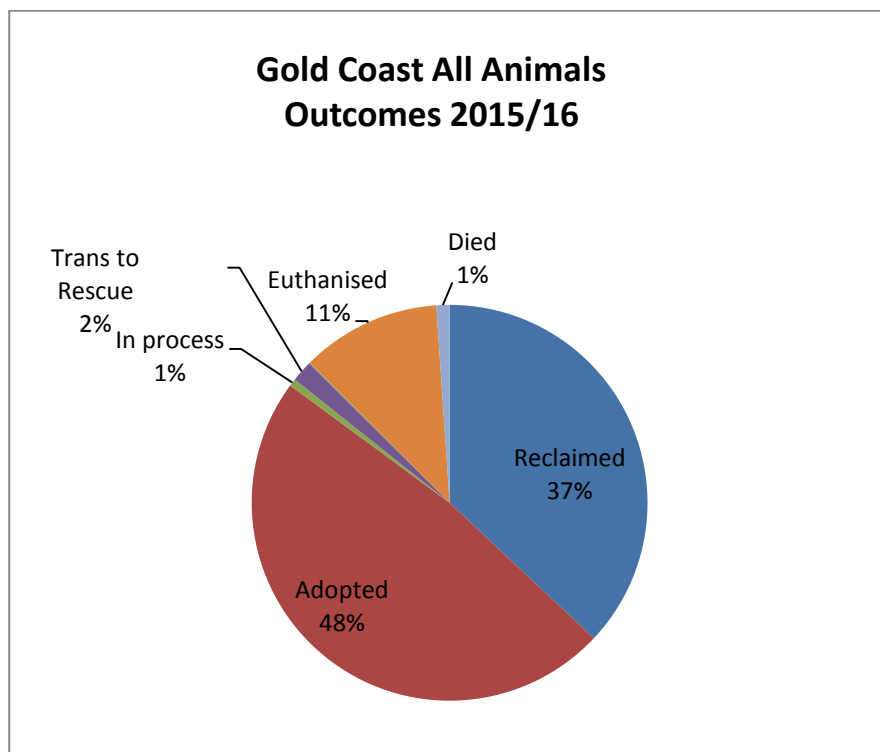
Cats



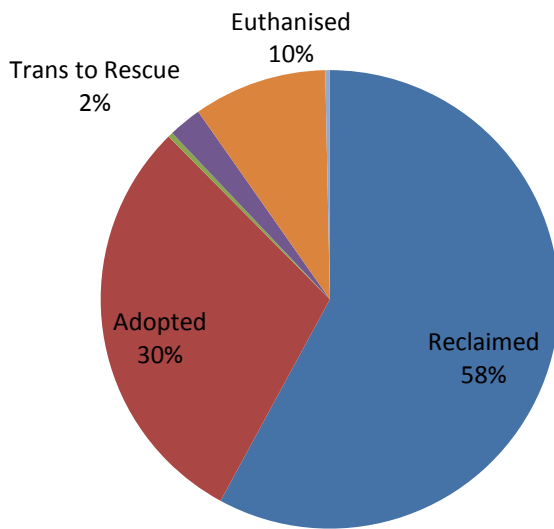
SECTION 2 City of Gold Coast 2015/16

Gold Coast All Stray and Surrendered Animals Outcomes 2015/16

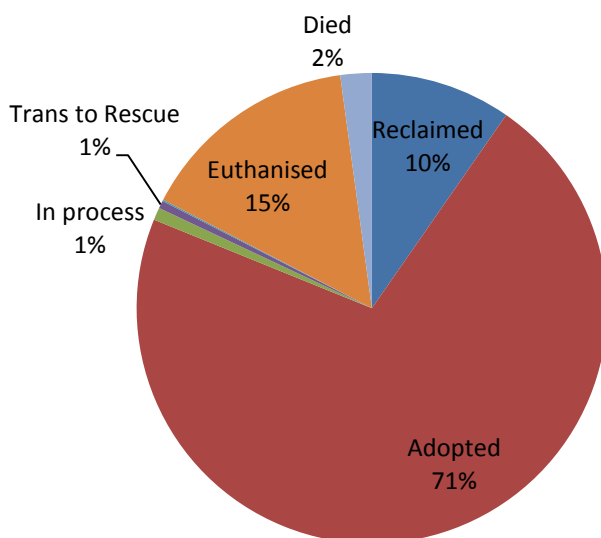
Type	Reclaimed	Adopted	In process	Trans to Rescue	Escaped/Stolen	Euthanised	Died	Total
Puppy	1	270	1	11	0	9	10	302
Dog	1979	744	11	69	0	313	1	3117
Canine	1980	1014	12	80	0	322	11	3419
%TotDog	57.9	29.7	0.4	2.3	0.0	9.4	0.3	100.0
Kitten	5	733	8	4	1	77	44	872
Cat	197	760	10	7	1	241	1	1217
Feline	202	1493	18	11	2	318	45	2089
% TotCat	9.7	71.5	0.9	0.5	0.1	15.2	2.2	100.0
Dog+Cat	2182	2507	30	91	2	640	56	5508
%TotD/C	40	46	1	2	0	12	1	100
Bird	1	77	0	2	1	1	2	84
Fowl	0	106	1	7	0	33	3	150
Goat	0	13	0	0	0	2	0	15
Guinea Pig	0	145	2	0	0	5	3	155
Horse	0	0	0	1	0	0	0	1
Pig	0	5	0	1	0	0	0	6
Rodent	0	22	3	2	0	3	0	30
Livestock	29	0	0	0	0	0	0	29
Other total	30	368	6	13	1	44	8	470
%TotOth	6	78	1	3	0	9	2	100
Total								
Animals	2212	2875	36	104	3	684	64	5978
% All								
Animals	37.0	48.1	0.6	1.7	0.1	11.4	1.1	100.0



Gold Coast Dogs Outcomes 2015/16

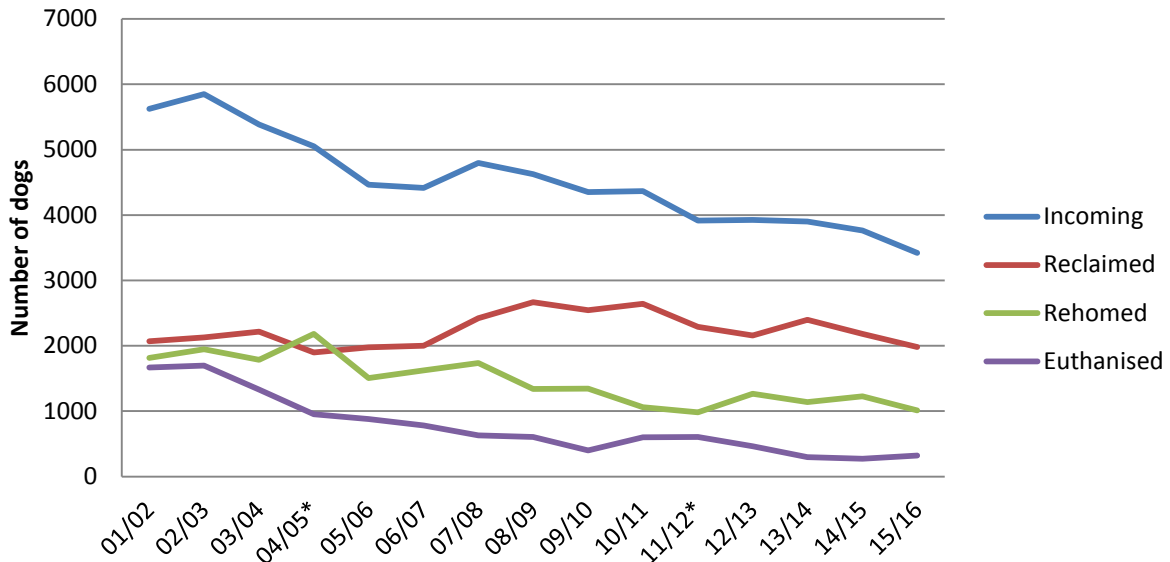


Gold Coast Cats Outcomes 2015/16



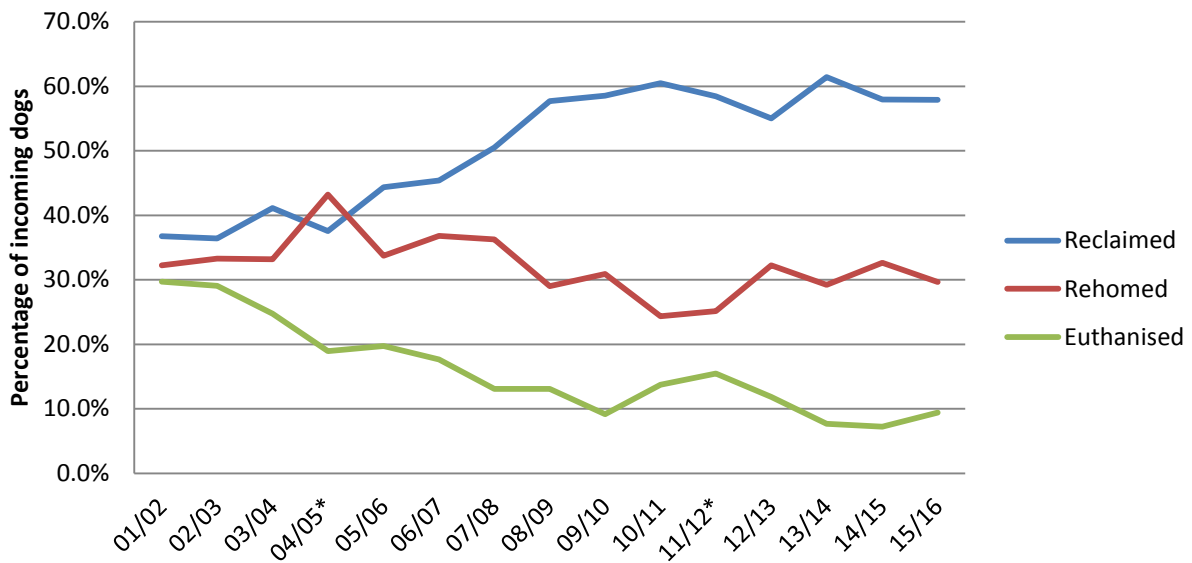
Gold Coast Dogs (Number) Number incoming, reclaimed, rehomed, euthanised 2001/2 - 2015/16

*2004/5 & 2011/12 possible overlap of data due to change of database systems



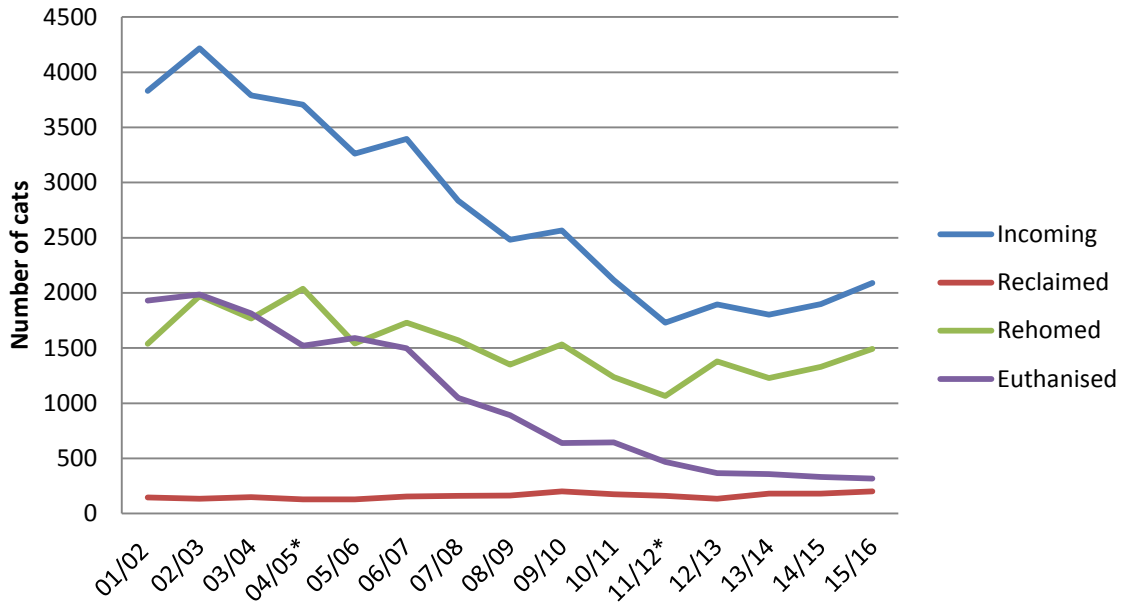
Gold Coast Dogs (%) % Reclaimed, rehomed, euthanised 2001/2 - 2015/16

*2004/5 & 2011/12 - possible overlap of data due to change of database systems



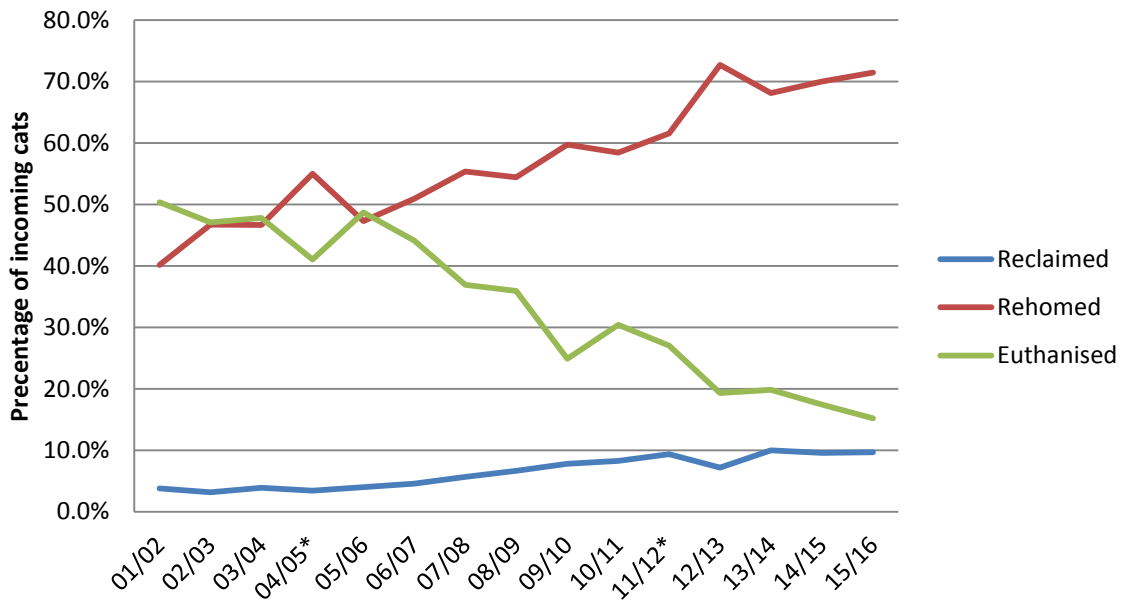
Gold Coast Cats (Number) Number incoming, reclaimed, rehomed, euthanised 2001/2 - 2015/16

*2004/5 & 2011/12 - possible overlap of data due to change of database systems



Gold Coast Cats (%) % Reclaimed, rehomed, euthanised 2001/2 - 2015/16

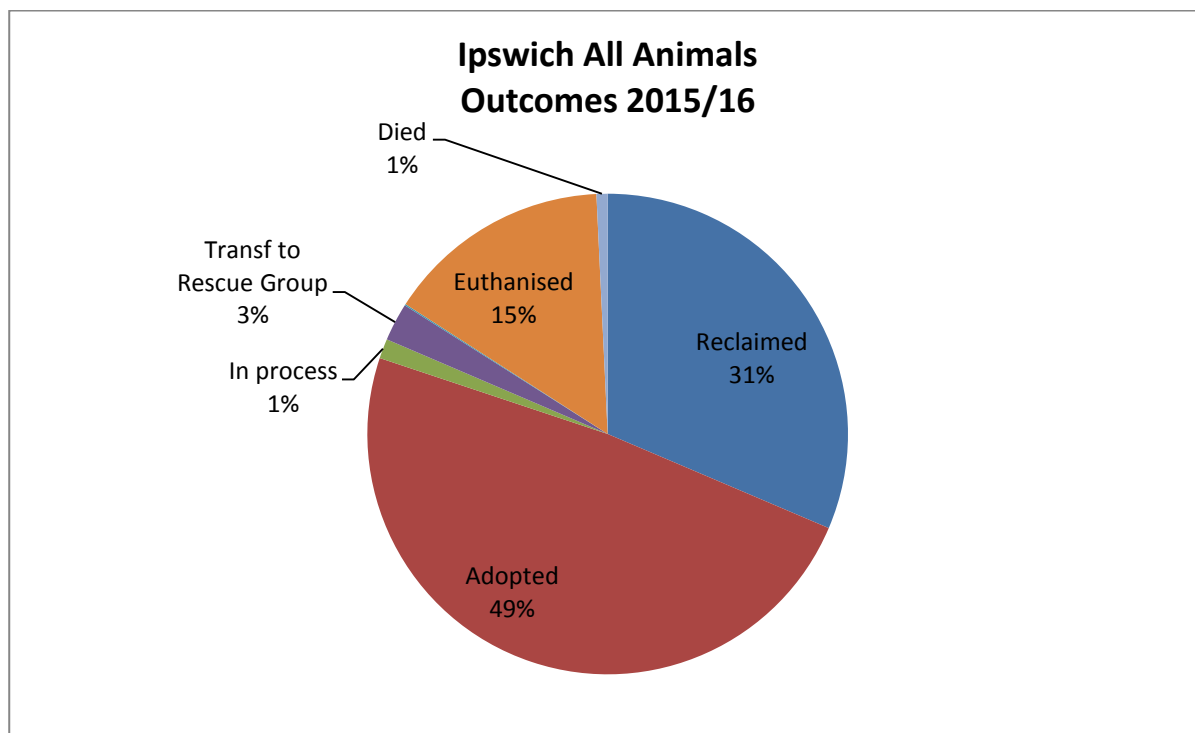
*2004/5 & 2011/12 possible overlap of data due to change of database systems



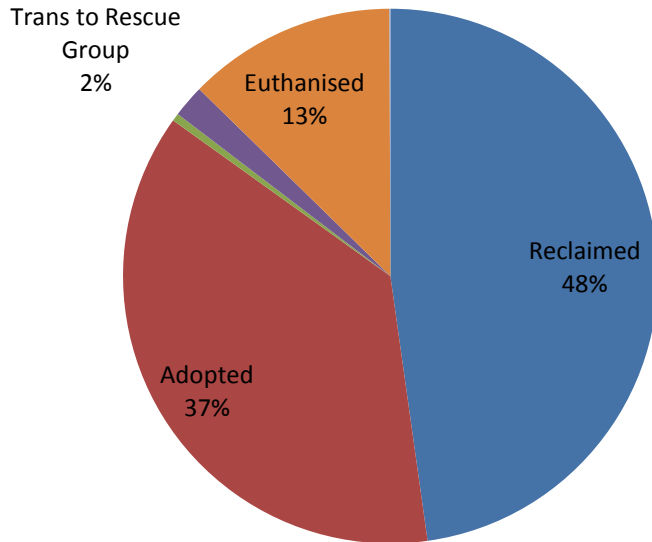
SECTION 3 Ipswich City Stray and Surrendered Animals 2015/16

Ipswich City All Stray and Surrendered Animals - Outcomes 2015/16

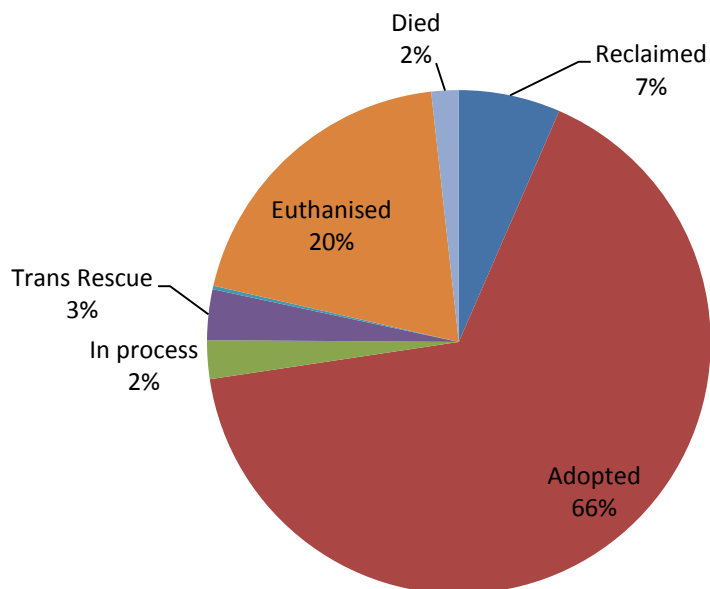
Type	Reclaim	Adopt	In process	Transf. to Rescue	Escaped/ Stolen	Euth	Died	Total
Puppy	2	468	2	8	0	27	2	509
Dog	1728	876	15	63	0	430	0	3112
Canine	1730	1344	17	71	0	457	2	3621
% Tot Dog	47.8	37.1	0.5	2.0	0.0	12.6	0.1	100.0
Kitten	1	1123	54	51	3	122	46	1400
Cat	170	609	11	34	3	393	0	1220
Feline	171	1732	65	85	6	515	46	2620
% Tot Cat	6.5	66.1	2.5	3.2	0.2	19.7	1.8	100.0
Bird	81	1						82
Cattle	13							13
Fowl		1		8				9
Goat	10	2						12
Guinea Pig		34	1					35
Horse	4							4
Pig	6	3						9
Rabbit			1			2		3
Rodents		12	1					13
Other	2							2
Tot Other	116	53	3	8	0	2	0	169
%TotOther	68.6	31.4	1.8	4.7	0.0	1.2	0.0	100
Total animals	2017	3129	85	164	6	974	48	6410
% All Animals	31	49	1	3	0	15	1	100



Ipswich Dogs Outcomes 2015/16

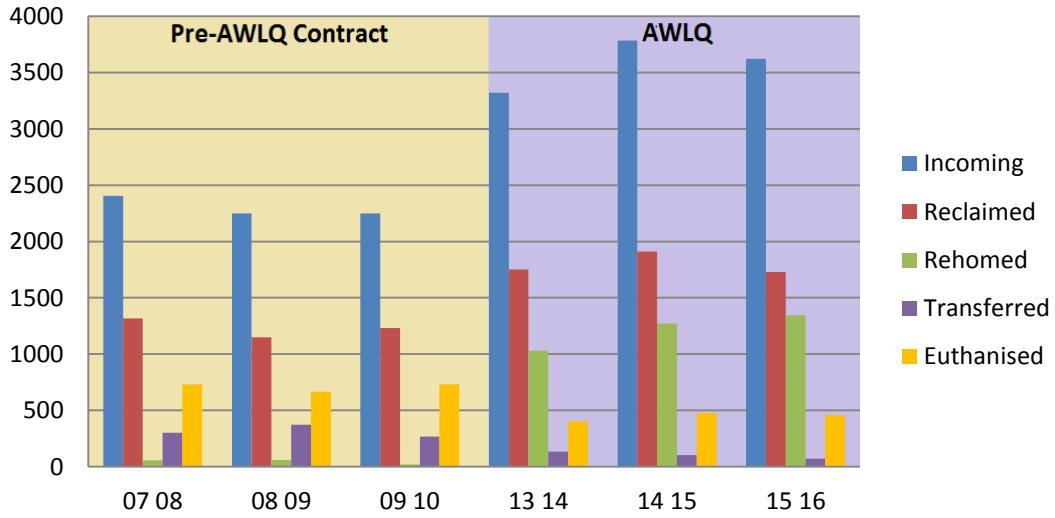


Ipswich Cats Outcomes 2015/16



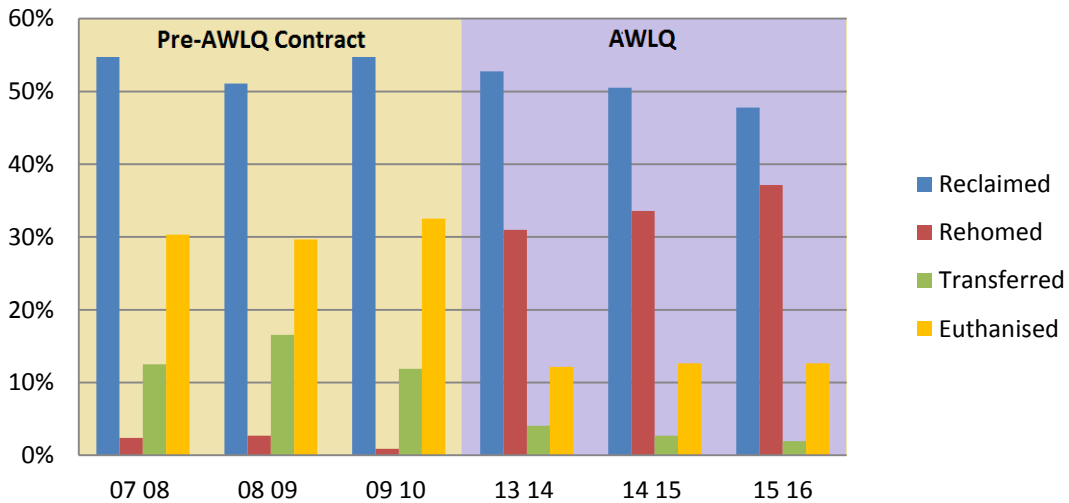
Ipswich Dog Outcomes (Number) 2007/8 - 2015/16

Note: 2011/12 & 2012/13 not included - incomplete data



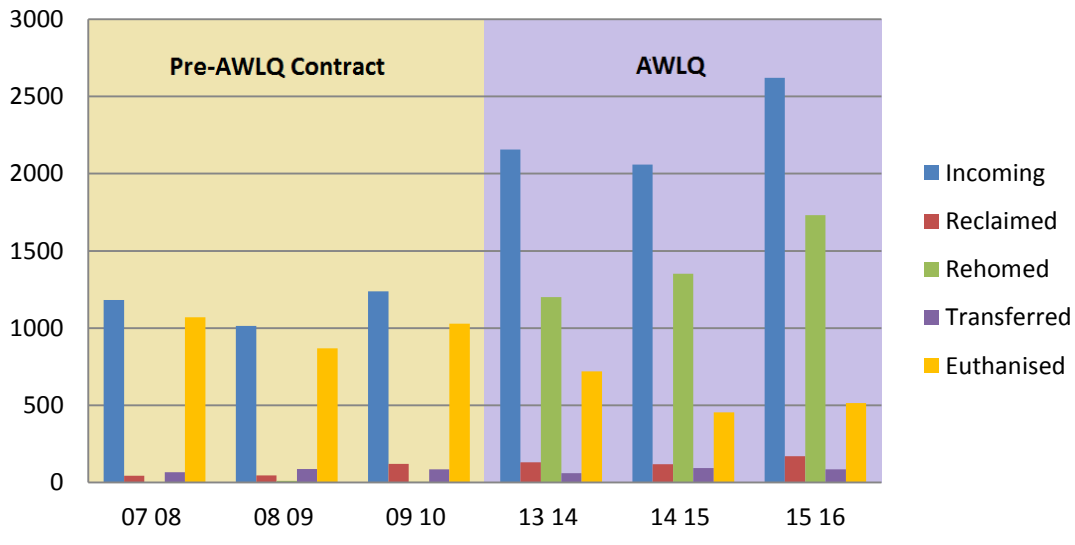
Ipswich Dog Outcomes (%) 2007/8 - 2015/16

Note: 2011/12 & 2013/14 not included - incomplete data



Ipswich Cat Outcomes (Numbers) 2007/8 - 2015/16

Note: 2011/12 & 2012/13 not included - incomplete data



Ipswich Cat Outcomes (%) 2007/8 - 2015/16

Note: 2011/12 & 2013/14 not included - incomplete data

